



Volvo Penta Marine Diesel Engines



for commercial use

Volvo Penta Diesel Engines — world-famous for reliability

Volvo Penta is now proud to present a diesel engine programme for work boats which includes no less than eight different types of engine with outputs ranging from 62 to 300 horsepower. The experience and know-how accumulated during Volvo Penta's 65 years in the business of marine engine manufacture, is a valuable asset when developing Volvo's range of diesel engines. These engines –respected for their reliability in more than 100 countries throughout the world – are powerful marine propulsion units which can withstand the wear and tear of work boat life year after year under the most difficult operational conditions.

The continuous improvements made to Volvo Penta engines are based on the experience gained from more than 230,000 Volvo diesel engines produced and can satisfy the most exacting requirements made on a modern work boat.

The combination of low fuel consumption, high output, low weight, compact design and service compatibility provides worthwhile economic benefits. Volvo Penta engines are also famous for their long life – another quality which reduces operating costs – the result of the exacting appraisal and endurance testing which is part of the development work of each type of Volvo Penta engine.

Volvo Penta is well aware that fast and efficient service is a necessity, especially for this type of boat. Which is why we have invested heavily in this field. The Volvo Penta service network has been vigorously expanded and today includes no less than 4,000 authorised servicing facilities throughout the world.





“DÖNNÖY” N 44 V Lofoten, Norway
63-ft, combined trawler and whale catcher
powered by Volvo Penta TAMD 120 A
Reverse gear: TWD 514. Ratio: 5.16:1
Propeller: Heimdal 1,600 mm fixed, adjustable
Speed: 10.5 knots



“ANNA MARIE” S505 Aalbeck, Denmark
13 ton trawler powered by Volvo Penta TMD 70 B
Reverse gear: TWD 506. Ratio 4.5:1
Propeller: Hundested 1200 mm fixed, adjustable
Speed: 9.0 knots



“KRISTJAN” 15122 Akureyri, Iceland
30 ton combined line and netter powered by
Volvo Penta TMD 120 A
Reverse gear: TWD 514. Ratio: 3.5:1
Propeller: Federal 4-blade 1160 mm
Speed: 10.5 knots



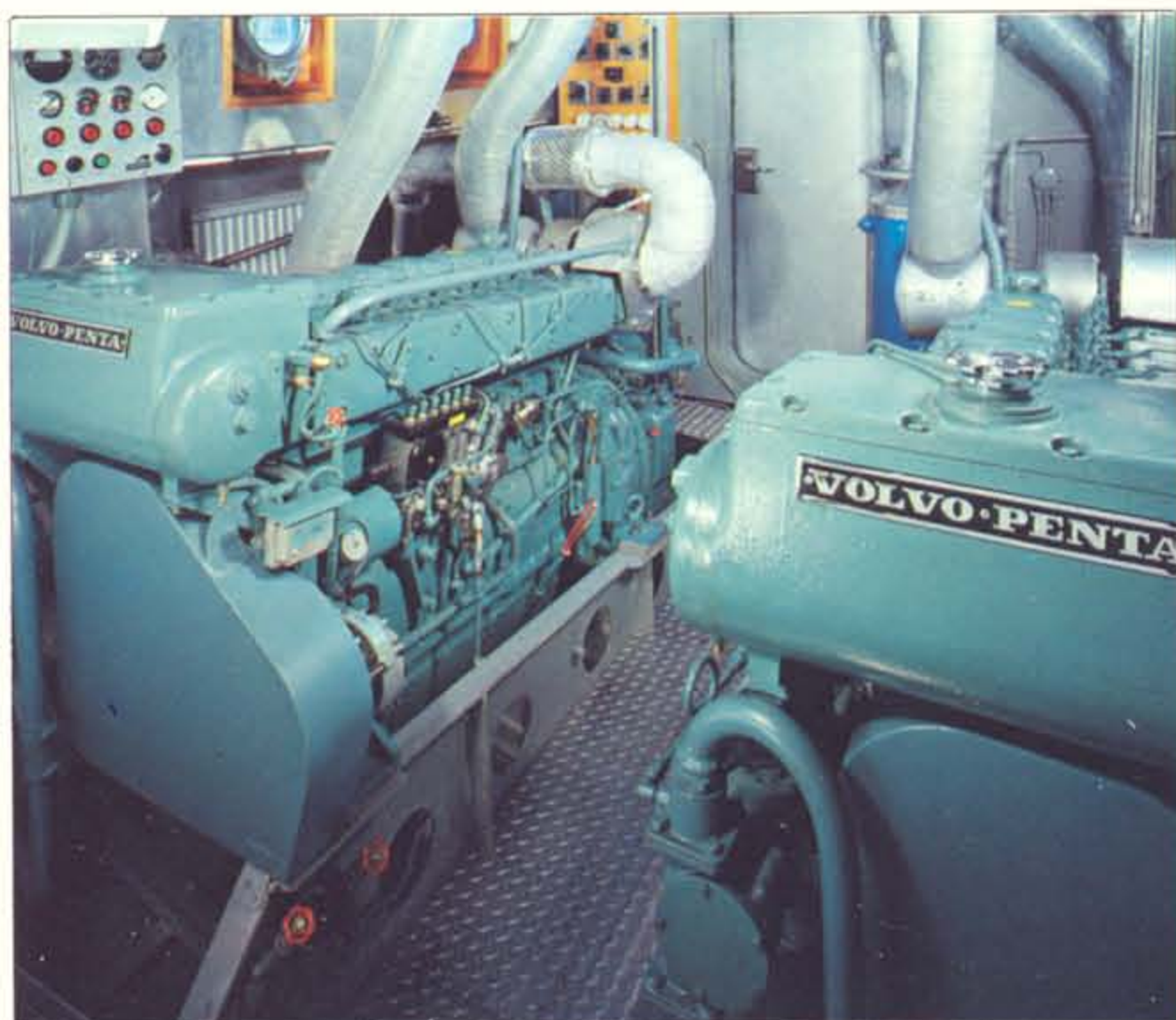
“VALKER” N 116 A Bleik Andöya, Norway
57-ft, combined line and netter powered by
Volvo Penta TMD 120 A
Reverse gear: TWD 514. Ratio: 4.5:1
Propeller: Heimdal 1350 mm fixed, adjustable
Speed: 9.5 knots



“MARY E” Ketchikan, Alaska
29 ton trawler powered by Volvo Penta TMD 70
Reverse gear: TWD MG 506. Ratio: 2.96:1
Propeller: 3-blade 810 mm
Speed: 9 knots



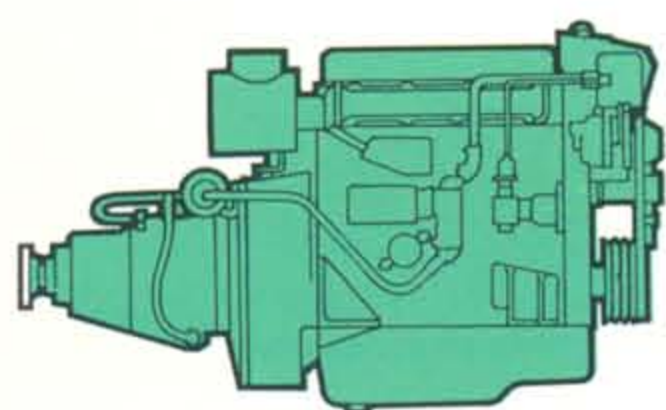
“VÄSTERLAND” GG 181 Höno, Sweden
76 ton trawler powered by Volvo Penta TAMD 120 A
Reverse gear: TWD MG 514. Ratio: 5.16:1
Propeller: 3-blade variable pitch
Speed: 10 knots



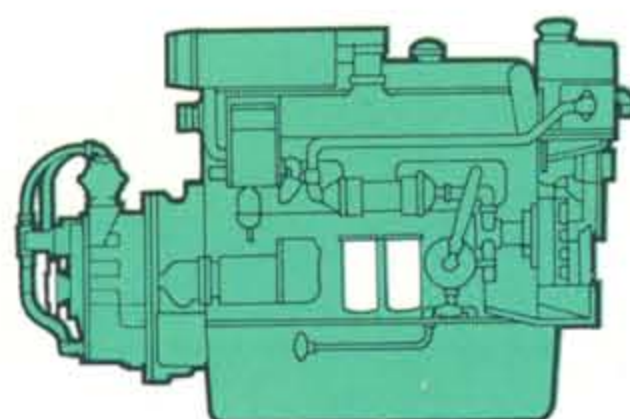
This is a good example of how a twin installation can be carried out. This installation, which is ideal from a servicing viewpoint, consists of two Volvo Penta TMD 100 A units each giving 203 horsepower.

Engine installation on the tugboat "Britton" of Gothenburg, Sweden. She is powered by a Volvo Penta TMD 120 A with a TWD MG 514 reverse reduction gear with a ratio of 5.16:1.

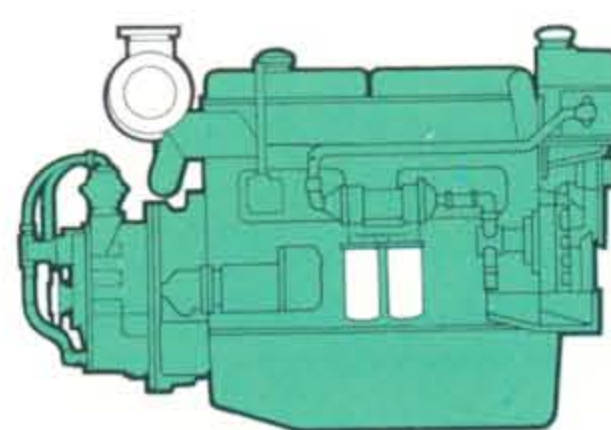
Diesel engines for commercial use



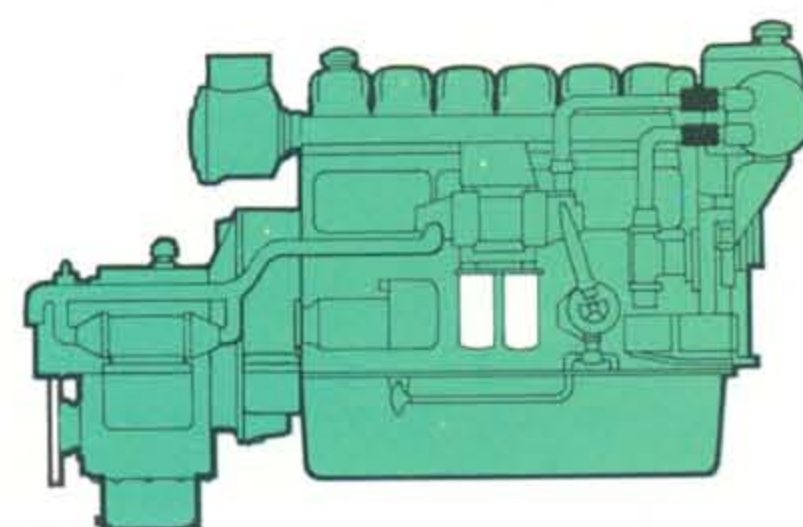
MD 42A



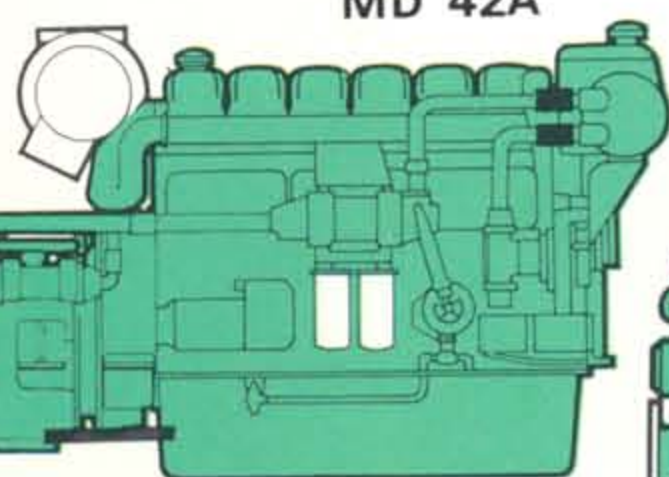
MD 70B



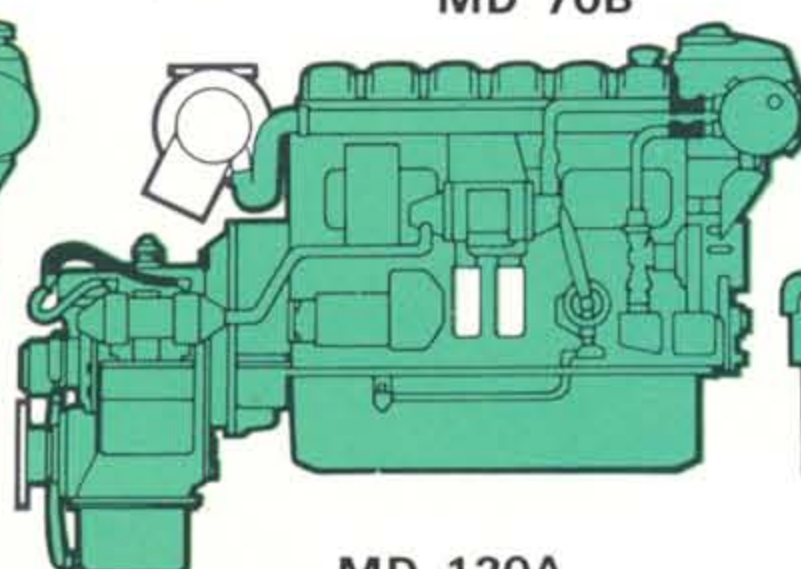
TMD 70B



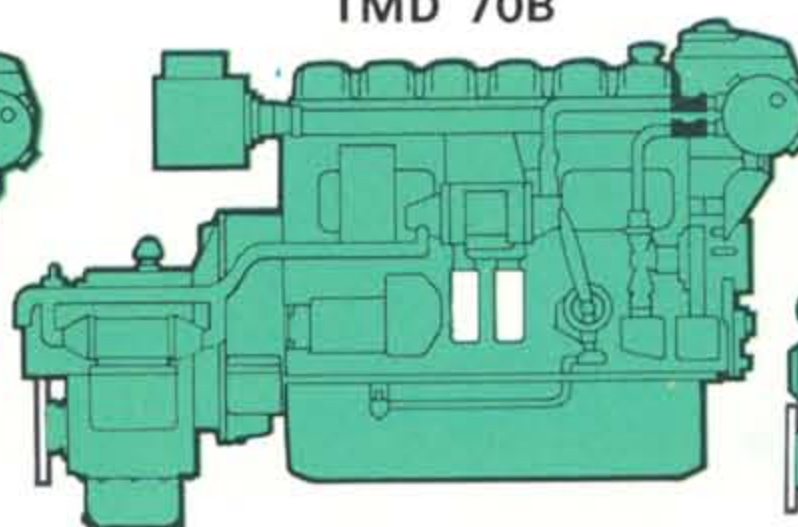
MD 100B



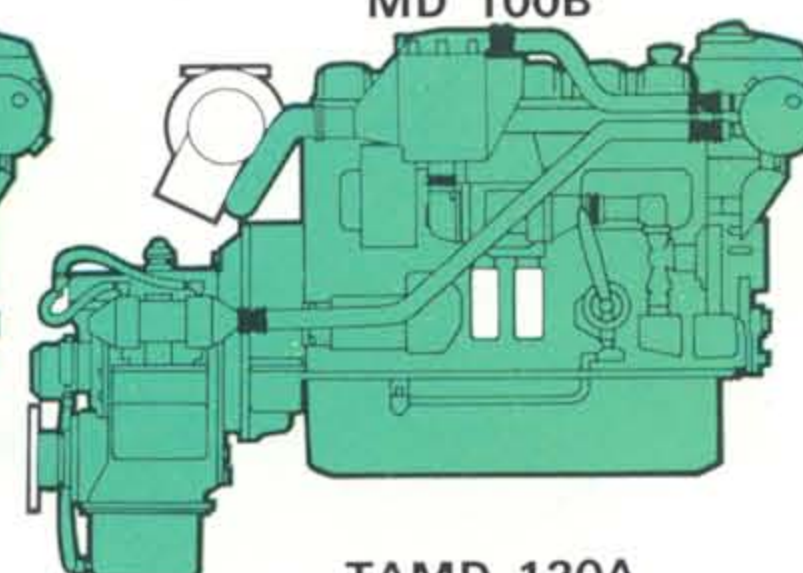
TMD 100A



MD 120A



TMD 120A



TAMD 120A

DATA

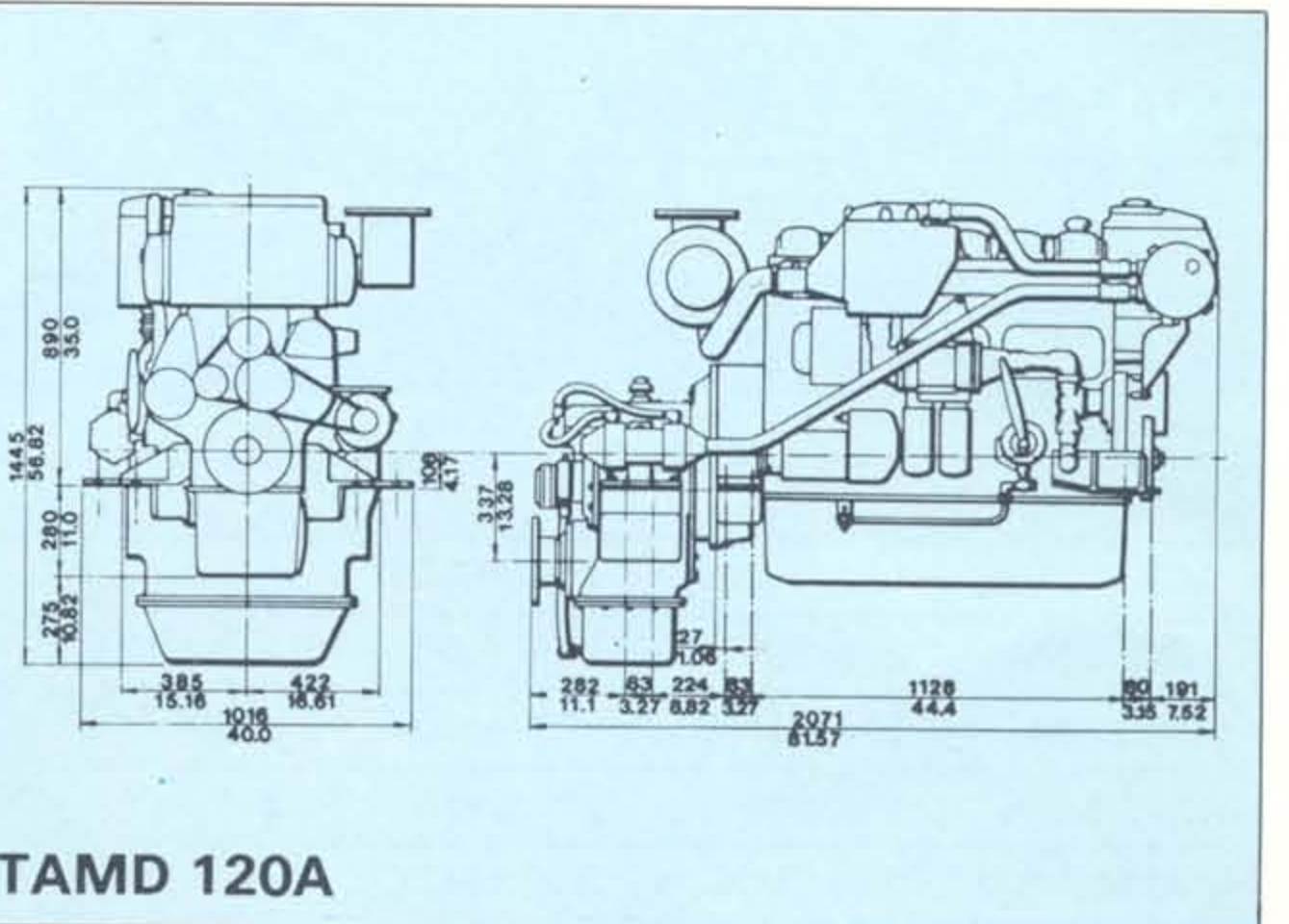
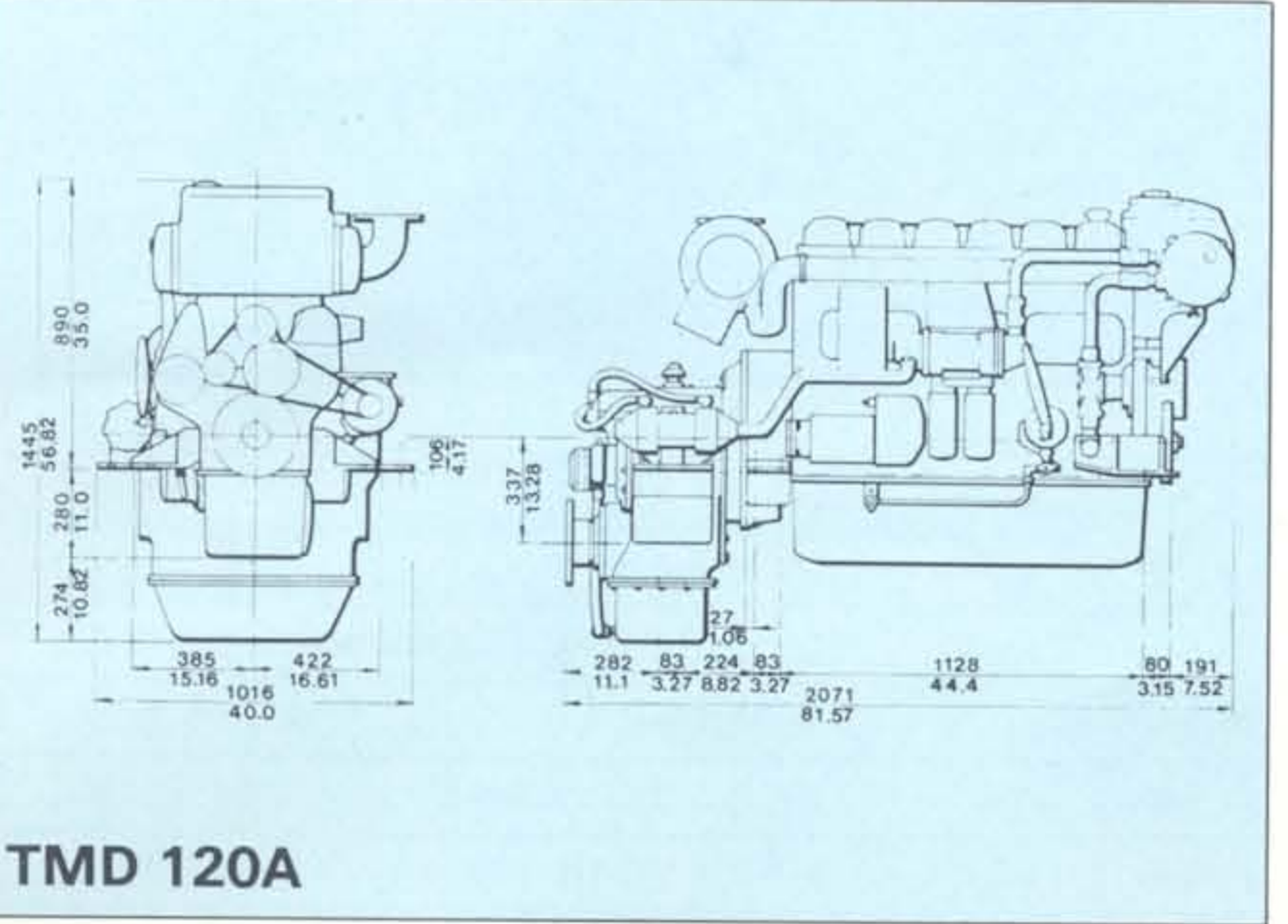
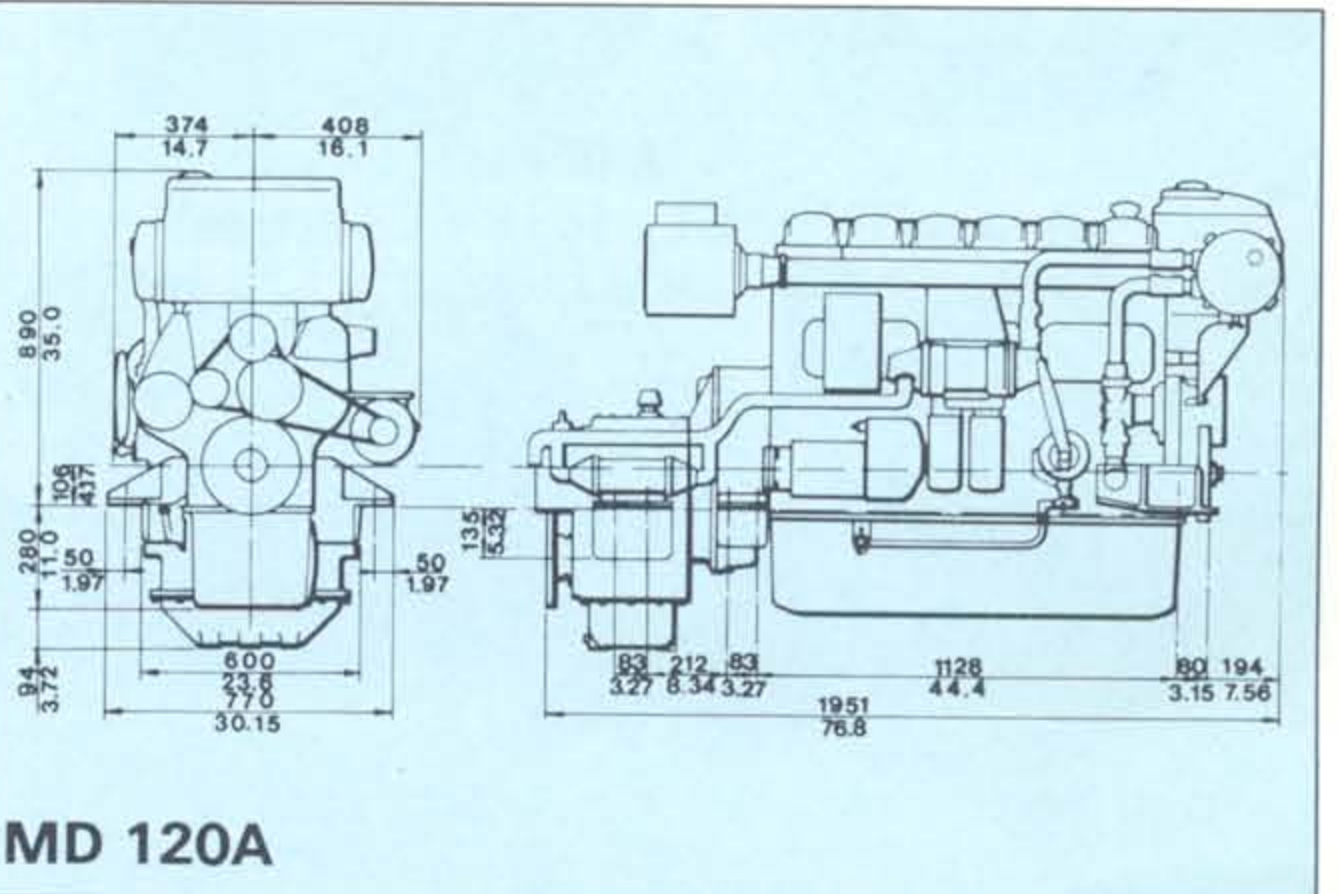
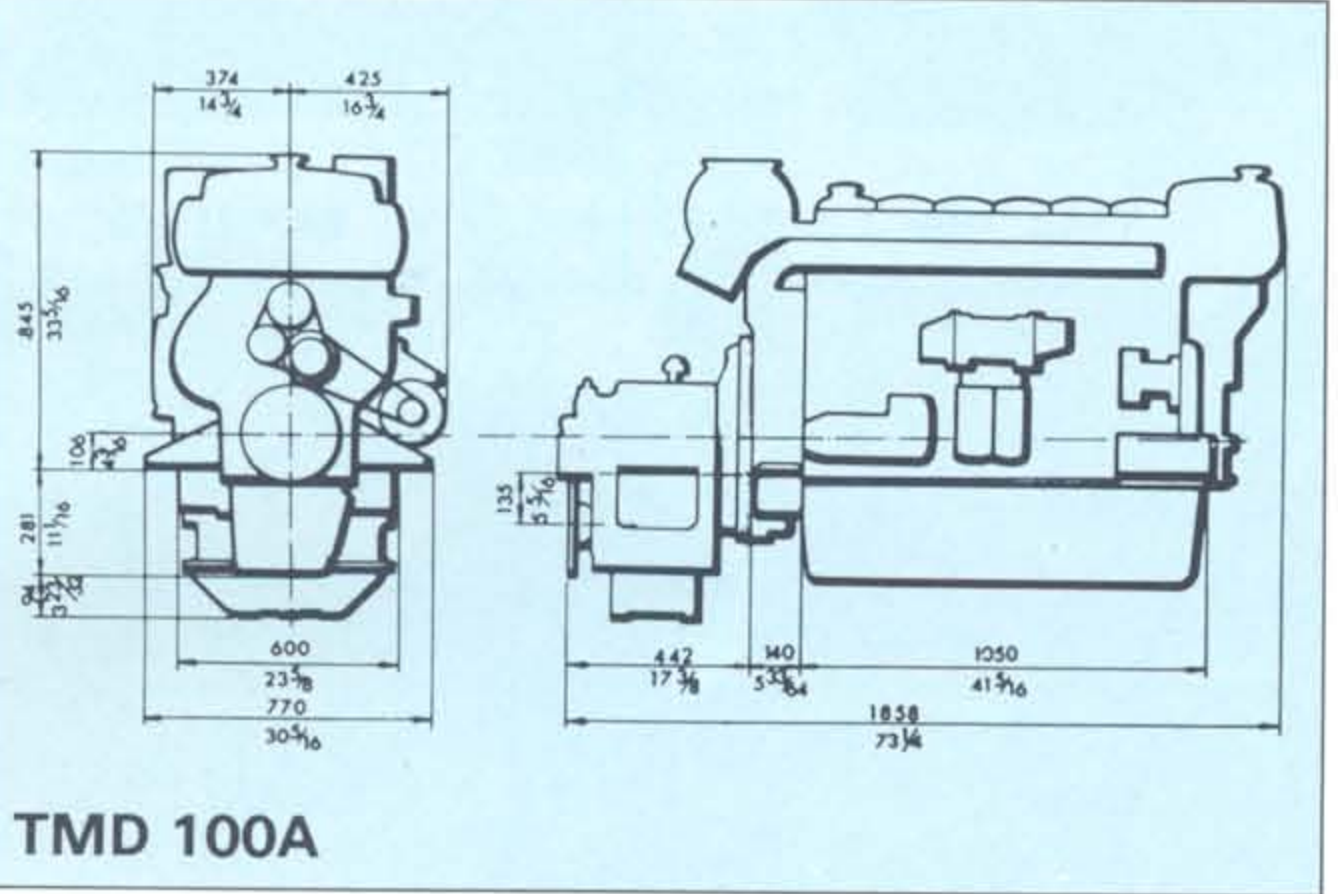
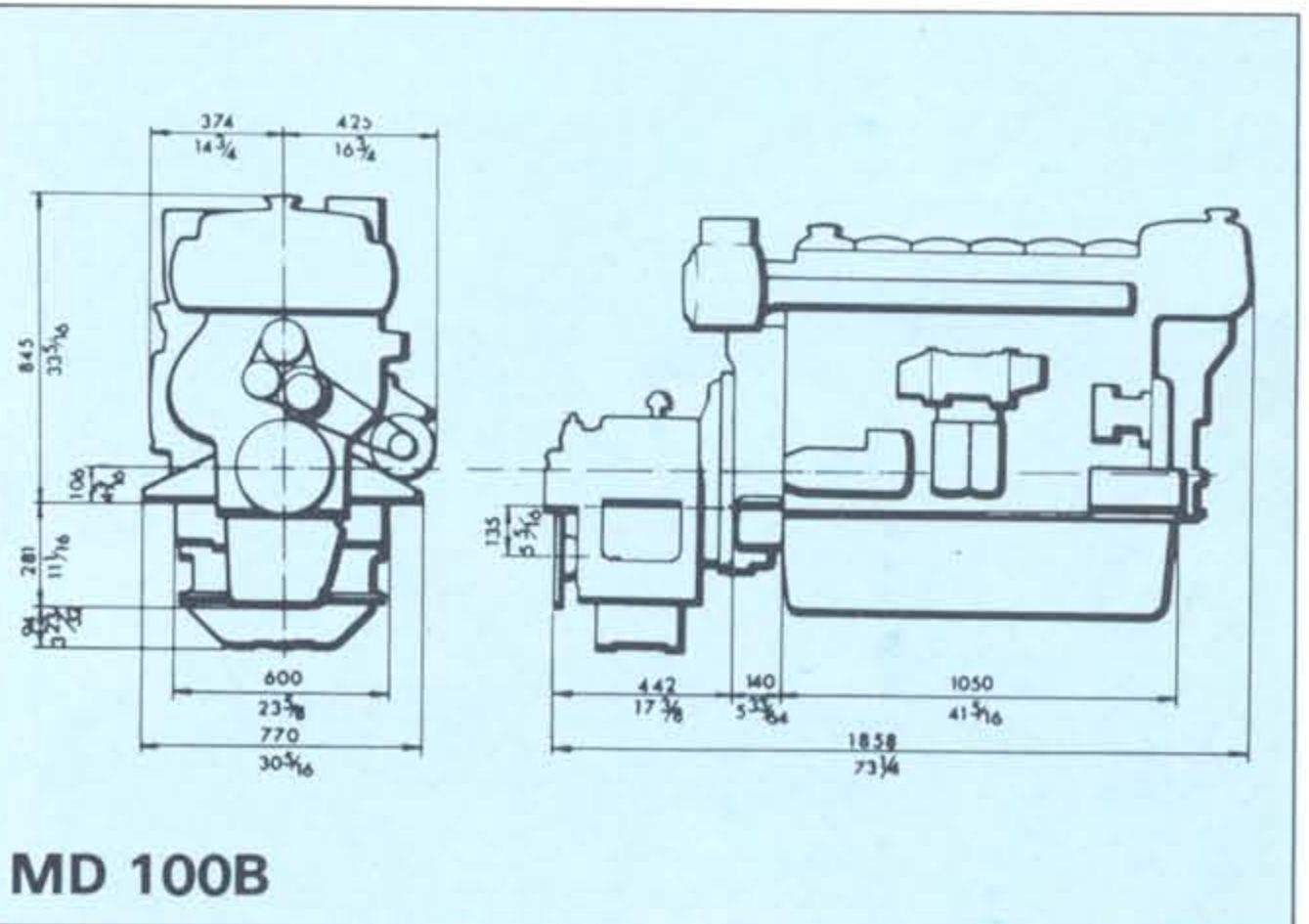
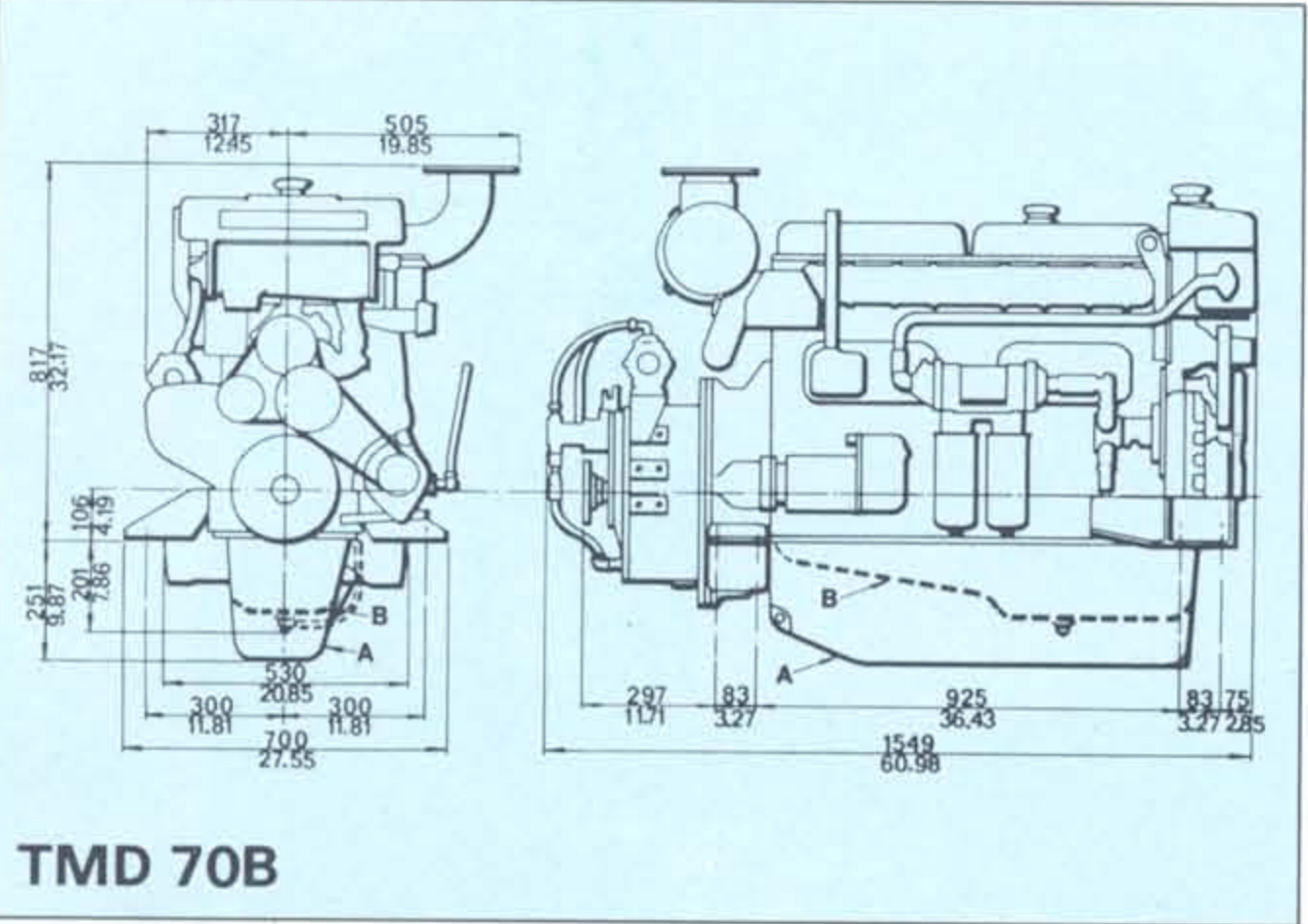
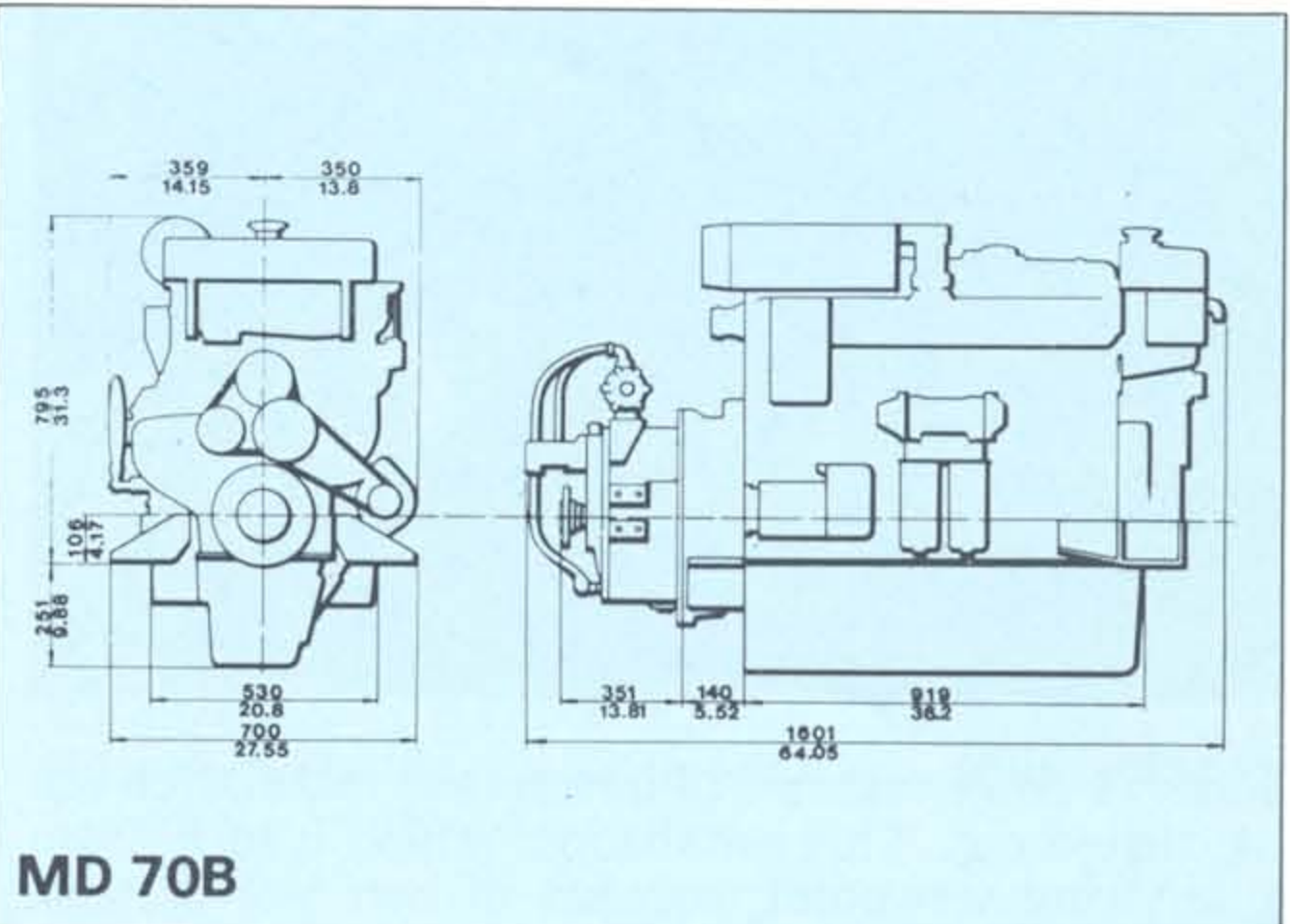
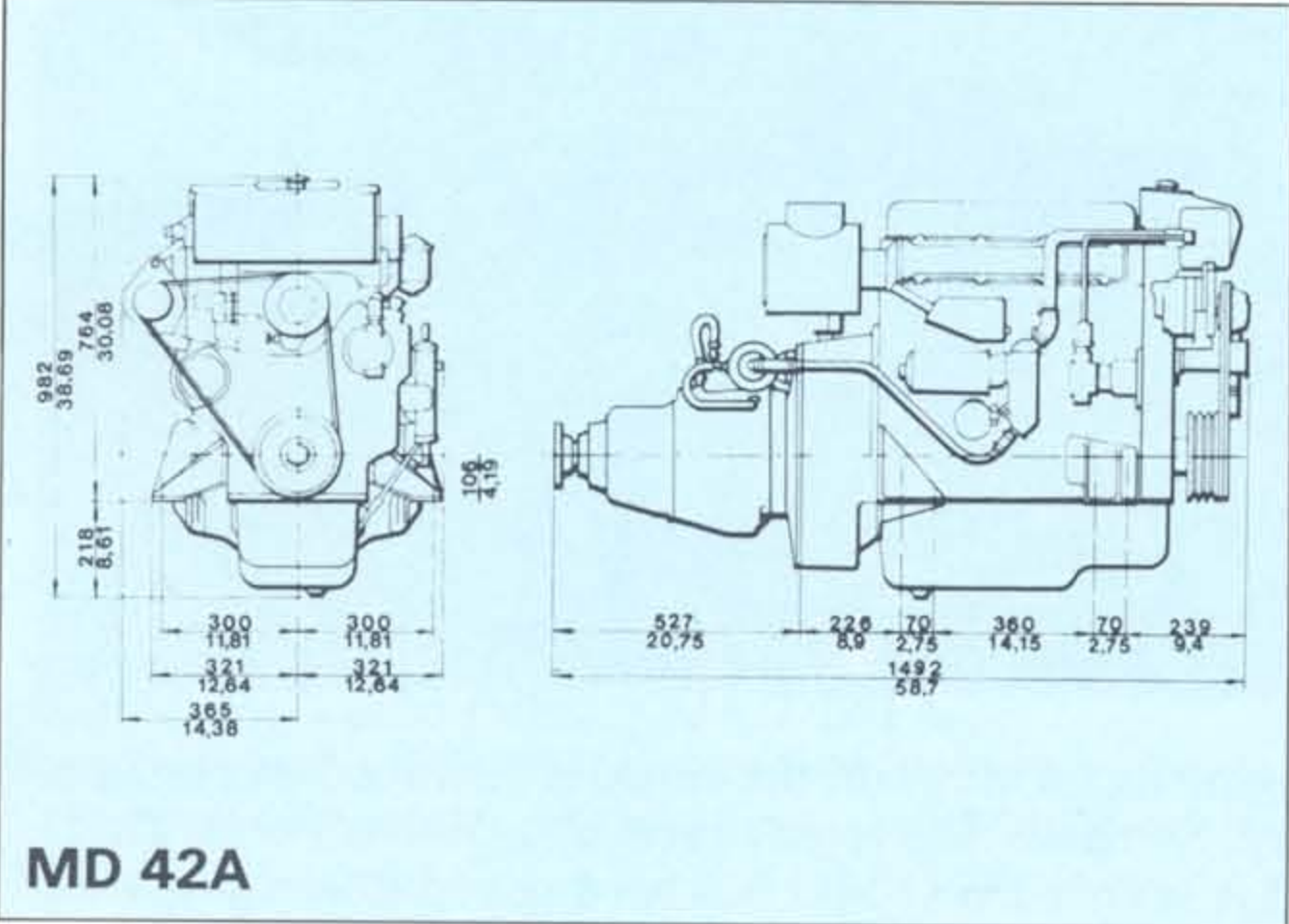
Type designation	Output h.p./r.p.m. Light duty	Output h.p./r.p.m. Heavy duty	No. of cyl.	Displacement litres	Reverse gear red. ratio	Weight, compl. approx. kg (lb)
MD 42A	68/2300	62/2000	4	4.20	2:1 3:1	560 ³⁾ (1235)
MD 70B	120/2200	110/2000	6	6.73	2:1 3:1 4.5:1	800 ³⁾ (1760)
TMD 70B	170/2300	157/2000	6	6.73	2:1 3:1 4.5:1	800 ³⁾ (1760)
MD 100B	162/2000	150/1800	6	9.60	2:1 3:1 4.5:1	1140 ³⁾ (2510)
TMD 100A	218/2000	203/1800	6	9.60	2:1 3:1 4.5:1	1160 ³⁾ (2560)
MD 120A	189/2000	175/1800	6	11.98	2:1 3:1 4.5:1	1300 ³⁾ (2860)
TMD 120A	290/2000	270/1800	6	11.98	2:1 3:1 3.5:1 5.16:1	1350 ³⁾ (2980)
TAMD 120A	324/2000	300/1800	6	11.98	2:1 3:1 3.5:1 5.16:1 6:1	1360 ³⁾ (3000)

³⁾ Weight without reverse gear

Dimensions

mm

inches



Volvo Penta quality — well-known in more than 100 countries

Volvo Penta diesel engines for work boats are sold in more than 100 countries. Volvo Penta's investment in quality, reliability, long life and good service increases the demand for these engines year after year.

Quality: Volvo Penta designs and manufactures its engines from beginning to end. The knowledge and experience gained from the hundreds of thousands of engines produced during many decades is combined with stringent quality control.

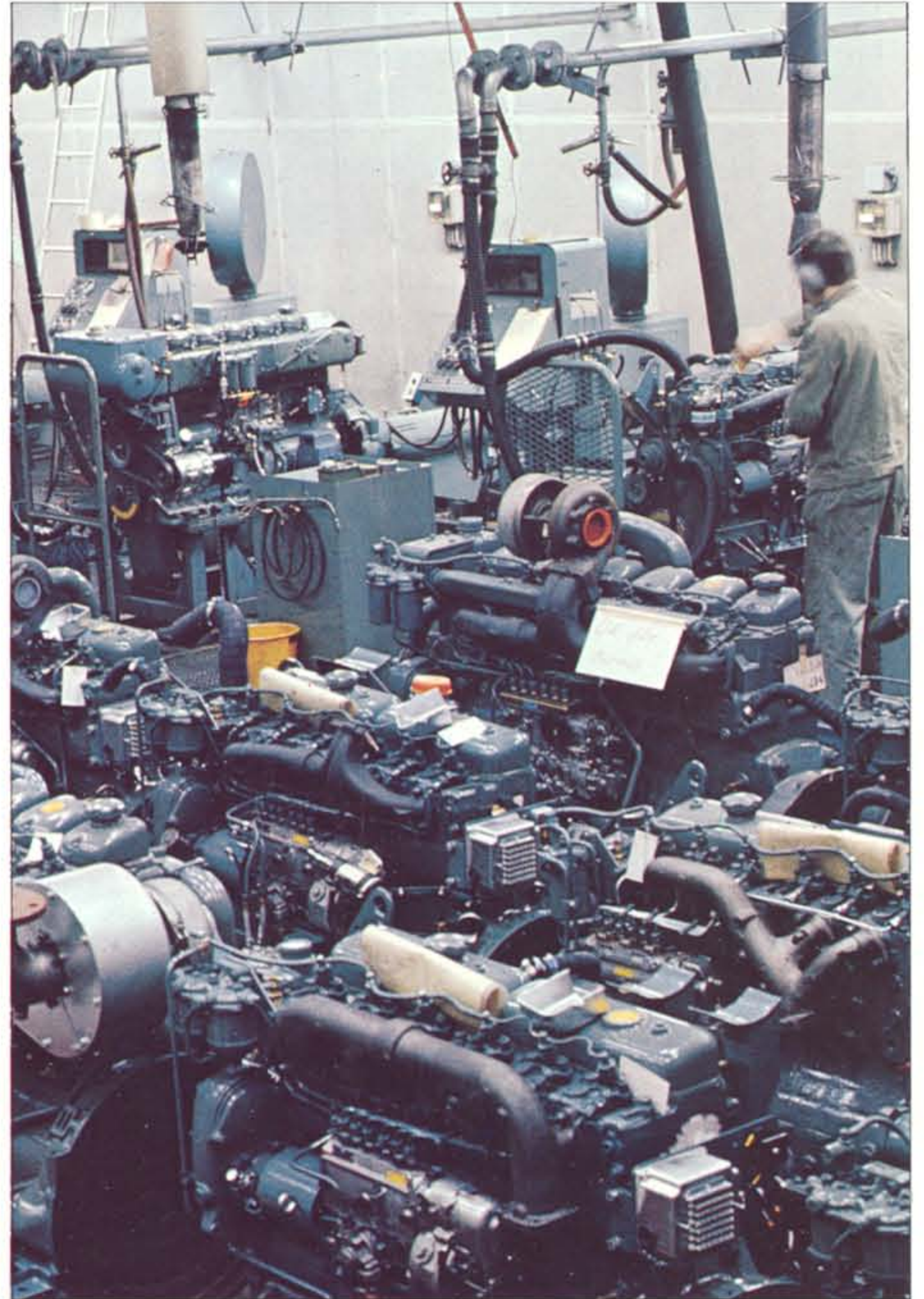
Reliability: Before being put into production for the first time, a new engine is tested to the limits of endurance. To win approval, a number of engines of each respective type must go through torturous tests lasting 3,000 hours without even a minor failure.

Life expectancy: Volvo Penta engines are world-famous for their strength. As a result of the intensive research work being continuously carried out, the performance and operating economy of our products are being improved the whole time. All the components are dimensioned and adapted to each other to ensure a maximum life time.

Each individual diesel engine is subjected to a special test run programme before delivery.

Volvo Penta engines are precision assembled using the latest machines and equipment.

Service: An important feature in the design of Volvo Penta engines is that they are built to simplify the service and maintenance required throughout their working life. In those countries where Volvo Penta products are marketed, the Company runs its own, authorised service workshops staffed by specially trained personnel. The Volvo Penta service schools train hundreds of mechanics annually.



AB VOLVO PENTA

Box 392, S-401 26 Göteborg 1, Sweden

Telephone: 031/23 54 60

Cables: Penta

Telex: 207 55