

# Neutra-Salt

## Operator's Manual



Neutra-Salt Engine Flushing System  
Neutra-Salt  
Neutra-Salt  
Neutra-Salt  
Neutra-Salt  
Neutra-Salt



Marine Accessories  
by Volvo Penta





Pour avoir un manuel d'utilisation en français, commandez la référence N° 7742329 à votre distributeur Volvo Penta.



Eine Betriebsanleitung in deutscher Sprache können Sie unter Artikel-Nr. 7742329 bei Ihrem Volvo Penta Händler bestellen.



Para recibir un manual de instrucciones en español, solicite a su distribuidor Volvo Penta el número de pieza 7742329.



Para obter o Manual do operador em português, encomendar o Número de Referência 7742329 ao distribuidor Volvo Penta



Per ottenere il Manuale d'Istruzioni in lingua italiana, ordinare l'art. num. 7742329 dal proprio Concessionario Volvo Penta.



Voor een bedieningshandleiding in het Nederlands, bestelt u art. nr. 7742329 bij uw Volvo Penta distributeur.



Voit tilata suomenkielisen käyttöohjekirjan osanumerolla 7742329 Volvo Penta -jälleenmyyjältäsi.



Για να αποκτήσετε ένα Εγχειρίδιο Χρήσης στα ελληνικά, παραγγείλετέ το με τον αριθμό 7742329 στην αντιπροσωπεία της Volvo Penta της περιοχής σας.



Du kan beställa en instruktionsbok på svenska med artikel-nr 7742329 från din Volvo Penta återförsäljare.



For at få en Bruger Instruktionsbog på dansk, bestil art.nr. 7742329 fra din Volvo Penta distributør.

## **IMPORTANT SAFETY NOTICES**

Carefully observe the safety alert symbols below for dangers, warnings, and cautions. They alert operators of possible dangers or important information contained in this manual.

### **DANGER**

*Failure to comply with a danger symbol will result in serious injury or death to boat operator, boat occupants, and/or others.*

### **WARNING**

*Failure to comply with a warning symbol may result in injury or death to boat operator, boat occupants, and/or others.*

**HOWEVER:** Warnings alone do not eliminate hazards, nor are they a substitute for safe boat handling and proper accident prevention measures!

### **CAUTION**

*Failure to comply with a caution may result in failure or damage to the equipment.*

### **NOTE**

*Special attention should be used to prevent incorrect assembly or disassembly.*

## **Neutra-Salt Engine Flushing System**

### **CAUTION**

The Neutra-Salt solution will freeze, which will damage the engine. If freezing conditions are possible, drain the engine after the procedure is complete. The solution will continue to provide corrosion protection for the engine after it is drained. Consult the engine's operator's manual for the draining procedure.

### **CAUTION**

The Neutra-Salt concentrate will freeze, which may damage the system.  
For winter storage, completely drain the system. Loosen the hose clamps on the inlet side of the solenoid and at the nipple on the back of the engine. Drain the concentrate and then re-install the hoses and clamps.  
If freezing conditions are possible and the boat is still being used, make sure the reservoir is no more than 75% full.

### **CAUTION**

The Neutra-Salt solution is biodegradable and is harmless to marine life. However some localities prohibit any type of overboard discharge. The user should check local regulations before using the Neutra-Salt system or before disposing of the Neutra-Salt solution.

### **CAUTION**

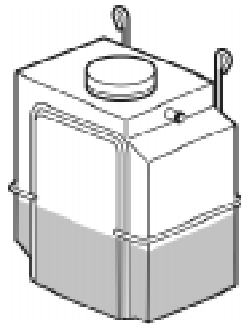
The Neutra-Salt system is only intended for use in engines that operate in salt or brackish water. It is not intended for engines used in fresh water.

## **FIRST AID;**

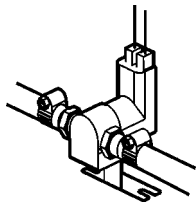
Neutra-Salt concentrate may cause eye irritation. In case of contact, flush eyes thoroughly with water for at least 15 minutes. If irritation persists, get medical attention.

**Neutra-Salt is a registered trademark of Volvo Penta of the Americas, Inc.**

## The components,



Reservoir



Solenoid

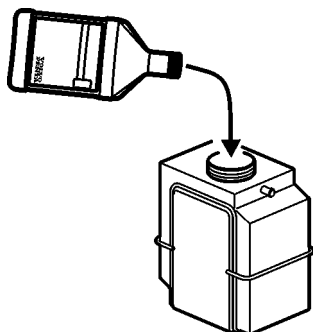


Rocker Switch

## Neutra-Salt system basics,

1. When injected in to the engine's cooling system the Neutra-Salt solution will flush salt deposits and leave a corrosion inhibiting coating on all metal parts.
2. The Neutra-Salt system should be used at the end of each boating day.
3. The Neutra-Salt concentrate is stored in a reservoir, usually located near the rear of the engine.
4. The concentrate is pulled from the reservoir and in to the cooling system by the engine's sea water pump.
5. The concentrate only flows from the reservoir when the solenoid is opened by pushing the rocker switch.  
The solenoid is usually located very close to the reservoir.
6. The rocker switch is located at the helm.

NOTE - some boats may have a switch that looks different than the one shown.



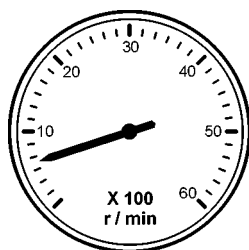
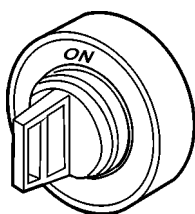
## Operating Procedure

1. Make sure the reservoir is at least 25% full with concentrate. If needed add more concentrate.

Refill only with QL Neutra-Salt Motor Flushing concentrate, available in gallon (P/N 41103102) or quart (P/N 41103103) bottles.

### **⚠ WARNING**

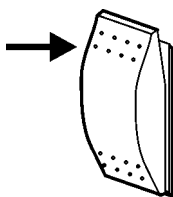
**Do not run the system if there is no concentrate in the reservoir. This could damage the sea water pump which could lead to engine damage or fire.**



2. The engine must be running for the sea water pump to pull the concentrate from the reservoir. If the boat is not in the water make sure there is a good supply of water for the engine. Start the engine and run at idle.

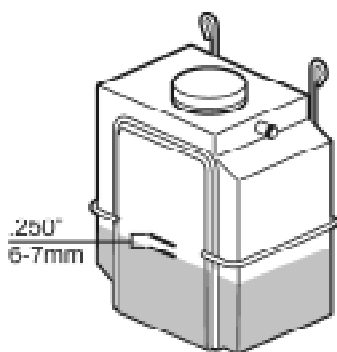
### **⚠ WARNING**

**Do not run the engine with inadequate water supply. This could result in sea water pump failure which could lead to engine damage or fire. Monitor the engine temperature during the procedure.**



3. Push and hold the rocker switch for 45 seconds. This will allow the proper amount of solution to enter the cooling system.

4. Turn off the engine and then release the rocker switch.



5. Check the reservoir, the fluid level should have dropped 6-7mm (.250"). If not, it may be necessary to repeat steps 1 - 4, this time run the engine at 1500-2000 RPM to help start the fluid. For normal operation, run the engine at idle.

**NOTE** - The system's fuse is located in one of the harnesses connected to the back of the switch.





**Marine Accessories  
by Volvo Penta**